

# TH

PRELIMINARY

# 5,5.19 P

# 5,5.19

- **Lowered design** for great stability
- Available with **Deutz Stage V and IIIA** engines
- Available in two engine sizes, 55 kW and 75 kW, to suit your needs
- Standard pivoting stabilisers for optimised lifting capacities up to 5.5 tonnes
- **350 bar L/S** hydraulic system
- **4WD**

## MAIN SECTORS

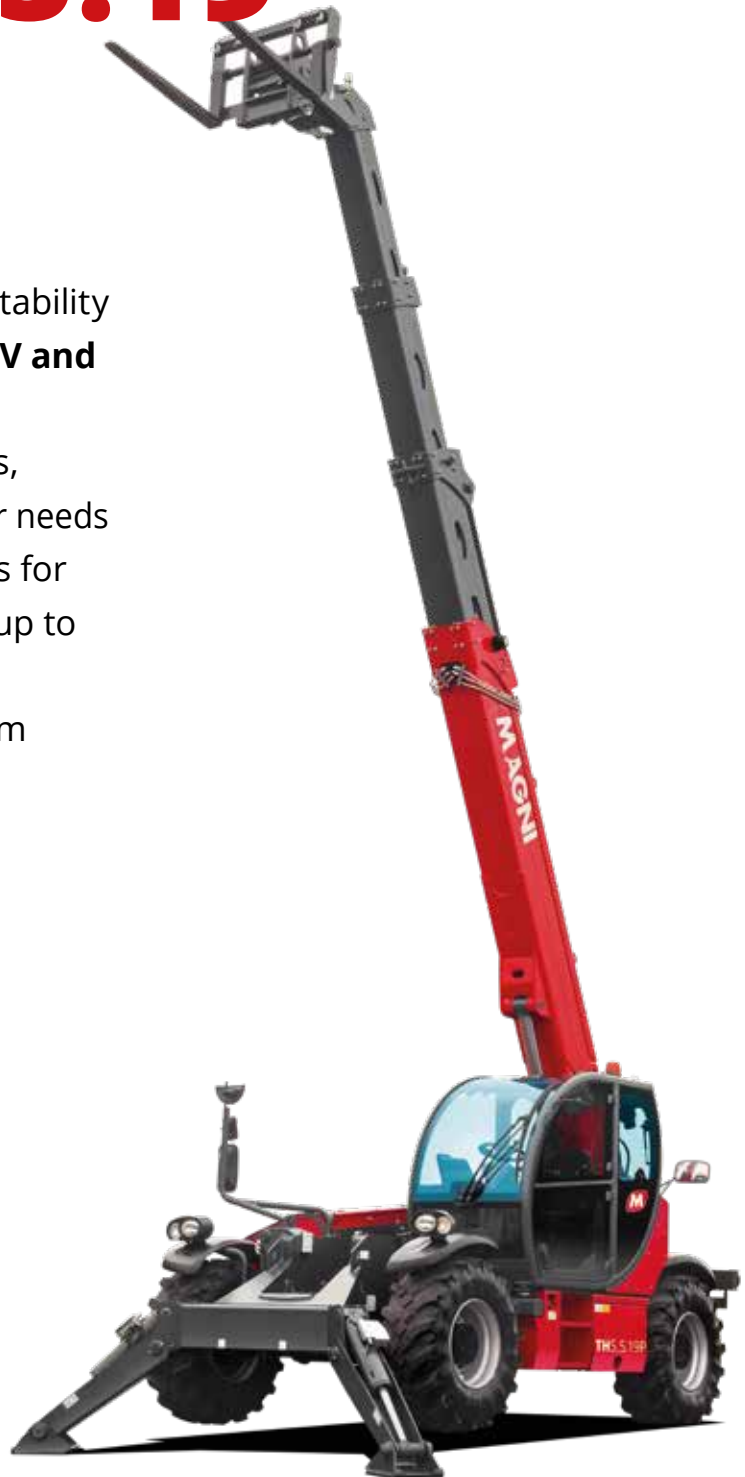
---



INDUSTRY

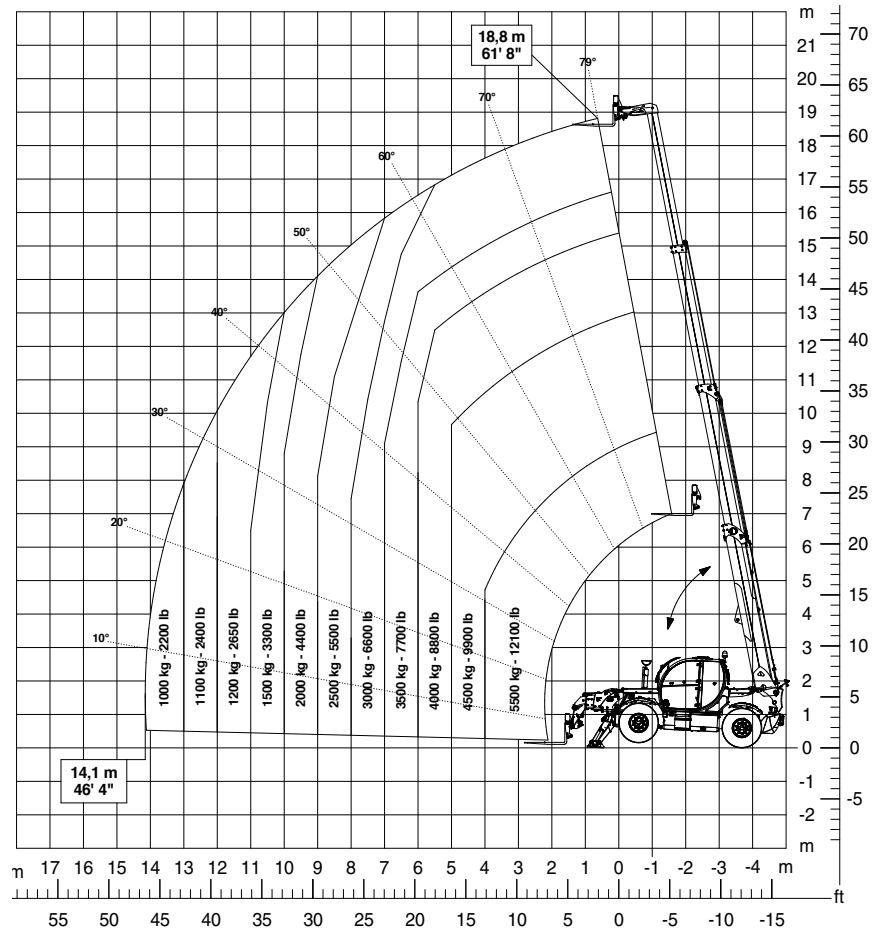


CONSTRUCTION



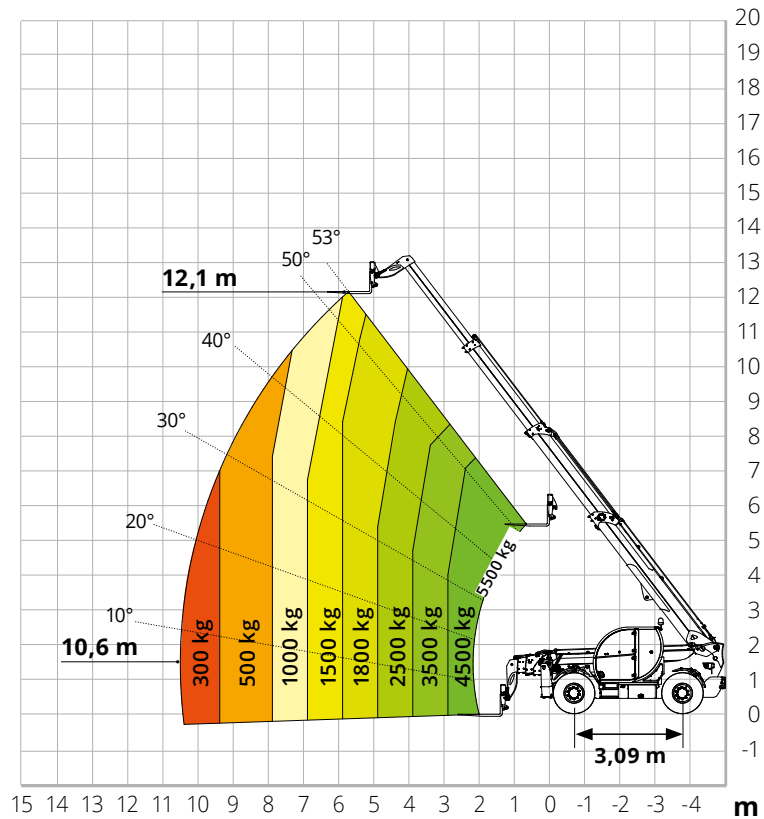
# Load chart on fully extended stabilizers

**PRELIMINARY**



# Load chart on tyres

**PRELIMINARY**



# TH 5,5.19 P / TH 5,5.19

**PRELIMINARY**

Machine model	TH 5,5.19 P		TH 5,5.19		
	Telescopic handler				
Maximum lifting capacity	5,500 kg (center of gravity 600 mm)		5,500 kg (center of gravity 600 mm)		
Maximum lifting height	18.80 m		18.80 m		
Engine	Type	Deutz TCD 3,6 L4 Stage V	Deutz TCD 3,6 L4 EDG Stage IIIA	Deutz TCD 3,6 L4 Stage V	Deutz TCD 3,6 L4 EDG Stage IIIA
	Rated power	74,4 kW (101,2 hp) @ 2,200 rpm		55,4 kW (75,3 hp) @ 2,200 rpm	
	Maximum torque	410 Nm @ 1,600 rpm		405 Nm @ 1,300 rpm	390 Nm @ 1,300 rpm
	Displacement	3,6 l		3,6 l	
	Cylinders	4 in line		4 in line	
	Engine configuration	Diesel direct injection turbocharged		Diesel direct injection turbocharged	
	Cooling system	Water – intercooler		Water – intercooler	
Transmission	Type	Hydrostatic		Hydrostatic	
	Model	Bosch Rexroth		Bosch Rexroth	
	Maximum pressure	500 bar		500 bar	
	Displacements	Electronically controlled variable displacement pump Variable displacement motor		Electronically controlled variable displacement pump Variable displacement motor	
Gear box	Dropbox, 2 speeds forward-reverse		Dropbox, 2 speeds forward-reverse		
Axles and brakes	Type	Axles with planetary gearboxes		Assali con riduttori epicicloidali	
	Rear axle	Oscillating and steering with hydraulic locking		Oscillating and steering with hydraulic locking	
	Front axle	Oscillating and steering with levelling +/- 8°		Oscillating and steering with levelling +/- 8°	
	Service brake	Hydraulically operated wet multi-disk brakes on each axle		Hydraulically operated wet multi-disk brakes on each axle	
	Parking brake	Spring applied hydraulic release Multi-disk brake (S.A.H.R.)		Spring applied hydraulic release Multi-disk brake (S.A.H.R.)	
	Tyres dimensions	445/65 R22,5		445/65 R22,5	
	Max. travel speed	35 km/h		25k m/h	
Performance	Drawbar pull	72 kN		72 kN	
	Gradeability	51 %		51 %	
	Turning radius (end of forks)	5,610 mm		5,610 mm	
	Total unladen	14,100 kg (preliminary)		14,100 kg (preliminary)	
Weights	Front axle unladen (boom retracted and lowered)	5,900 kg (preliminary)		5,900 kg (preliminary)	
	Rear axle unladen (boom retracted and lowered)	8,200 kg (preliminary)		8,200 kg (preliminary)	
	Fuel tank	145 l		145 l	
Tank and system capacities	AdBlue	10 l		10 l	
	Hydraulic oil tank	90 l		90 l	
	Engine oil tank	9 l		9 l	
	Cooling liquid	20 l		20 l	
	Max. operating system pressure	350 bar		350 bar	
Hydraulic circuit for movements	Circuit type	Load sensing		Load sensing	
	Service pump	Bondioli & Pavesi - Variable displacement		Bondioli & Pavesi - Variable displacement	
	Controls for boom movements	Danfoss – SIL 2 Electro-proportional valve		Danfoss – Electro-proportional valve	
	Controls for stabilizers	Bosch Rexroth – Electro-hydraulic actuators		Bosch Rexroth – Electro-hydraulic actuators	
	Movements control	1 joystick Danfoss with FNR switch and dead man safety device - Management with CAN bus technology		1 joystick Danfoss with FNR switch and dead man safety device - Management with CAN bus technology	
	Standard met	EN 1459-1: concerning standards for variable-reach trucks EN 13000: concerning standards for mobile cranes Only for model TH 5,5.19 P: EN 280: concerning standards for mobile elevating work platforms FOPS Level 2 / ROPS UE 2016/1628: concerning engine emissions standards			

# TH 5,5.19 P / TH 5,5.19

PRELIMINARY

