

HTH

24.11

The HTH 24.11 telescopic handler is ideal for moving large, bulky loads in complete safety. Able to lift up to 24 tonnes, it is compatible with a wide range of accessories, making it extremely versatile. Equipped with an RFID system which provides automatic recognition of the various attachments used, this telescopic handler is able to meet a wide range of applications in heavy industry and mining. Its four-wheel drive system, three manoeuvring modes and high ground clearance makes it highly manoeuvrable on all terrains.



MAIN SECTORS



HEAVY
INDUSTRY



HEAVY
LOGISTICS



MINING &
QUARRING

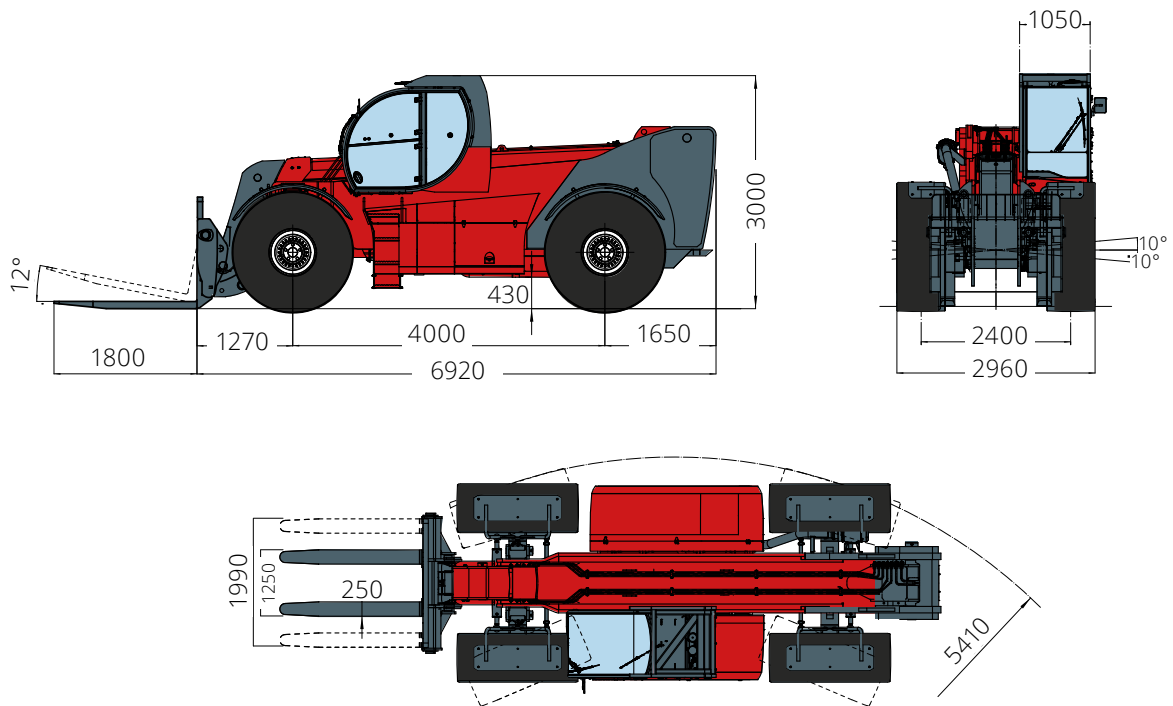


SPECIAL
PROJECTS

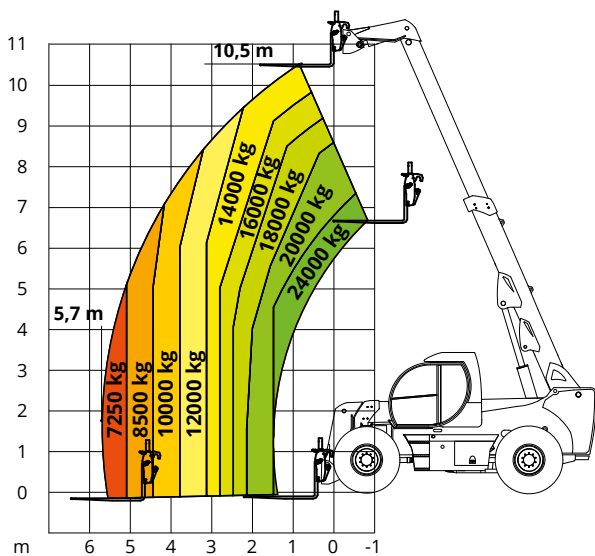
HTH 24.11

Machine model	Maximum lifting capacity	24,000 kg	
	Load center	900 mm	
	Maximum lifting height	10.50 m	
	Maximum reach	5.70 m	
Engine	Type	Volvo TAD583 VE - Stage V	Volvo TAD572 VE - Stage IV Volvo TAD552 VE - Stage IIIA
	Rated power	175 kW (238 hp) @ 2,300 rpm	160 kW (218 hp) @ 2,200 rpm
	Maximum torque	975Nm @ 1,380 rpm	910 Nm @ 1,450 rpm
	Displacement	5,13 l	
	Cylinders	4 in line	
	Engine configuration	Turbocharged diesel direct injection common rail	
	Cooling system	Water - intercooler	
	Cab	FOPS-ROPS tested hermetic cab with protectors	•
Front, rear and upper wiper		•	
Headlights for road circulation, flashing beacon		•	
Rear view mirrors		•	
Heating - Air conditioning		•	
Controls	Multi-function electro proportional joystick	•	
	Heavy Duty with epicyclic reduction	•	
	One steering cylinders each axle	•	
	Levelling correction front axle	+ 10° on the right and + 10° on the left	
Axles And brakes	3 types of steering	- with front steering - with round steer - with crab steering	
	Tilting rear axle	•	
	Hydraulic servo-assisted multidisc brake in oil bath on both axles, with double circuit	•	
	Negative parking brake	•	
	Tyre size	18,00 - R25 ** two each axle, driving and steering	
	Performance	Max. travel speed	25 km/h
Drawbar pull		184 kN	
Gradeability		67%	
Turning radius (at wheels)		5,410 mm	
Weights	Total unladen	29,700 kg	
	Front axle unladen (boom retracted and lowered)	9,200 kg	
	Rear axle unladen (boom retracted and lowered)	20,500 kg	
Transmission	Hydrostatics	Rexroth / Danfoss	
	Variable displacement hydrostatic pump with electronic control	•	
	Variable displacement hydrostatic motor	One	
	Gearbox	Gearbox with 2 speeds forward / reverse Differential hydraulic locking	
Hydraulic circuit	Load sensing piston pump	•	
	Circuit at 350 bar	•	
	Proportional hydraulic electrovalve	Bucher	
	Suction and return line filters	•	
	High pressure flexible hoses	•	
Tanks Capacities	Diesel fuel tank	195 l	
	AdBlue*	40 l	
	Hydraulic fluid	220 l	
	Engine oil	16 l	
	Cooliant	40 l	
Safety	Electronic safety system which controls the load with definition of the lifted load, radius and comparison with the diagrams stored	•	
	Block of aggravating movements of the load	•	
	Safety valves on cylinders	•	

HTH 24.11



Load chart
with forks



Load chart with tyres clamp
model TC 16.63

